

**NOT FOR  
CONSTRUCTION**

**DESIGN DEVELOPMENT**

SYMPHONY PARK - MODEL  
SHOWROOM

**LOCATION** / HUNTERSVILLE, NC  
**PROJECT #** / 208PD400  
**DATE** / 02-12-2021  
**DRAWN** / CRJUG

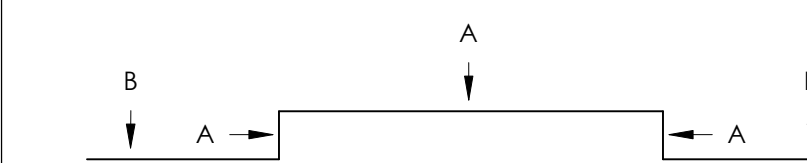
COPYRIGHT 2021 BB+M ARCHITECTURE PLLC.

Revisions		
No.	Description	Date

**EXTERIOR ELEVATIONS**

**GENERAL NOTES:**

MATERIAL (A) AND COLOR AT FACE OF BAY RETURNS  
AROUND THE SIDES AND BACK TO THE BUILDING. (TYP.)

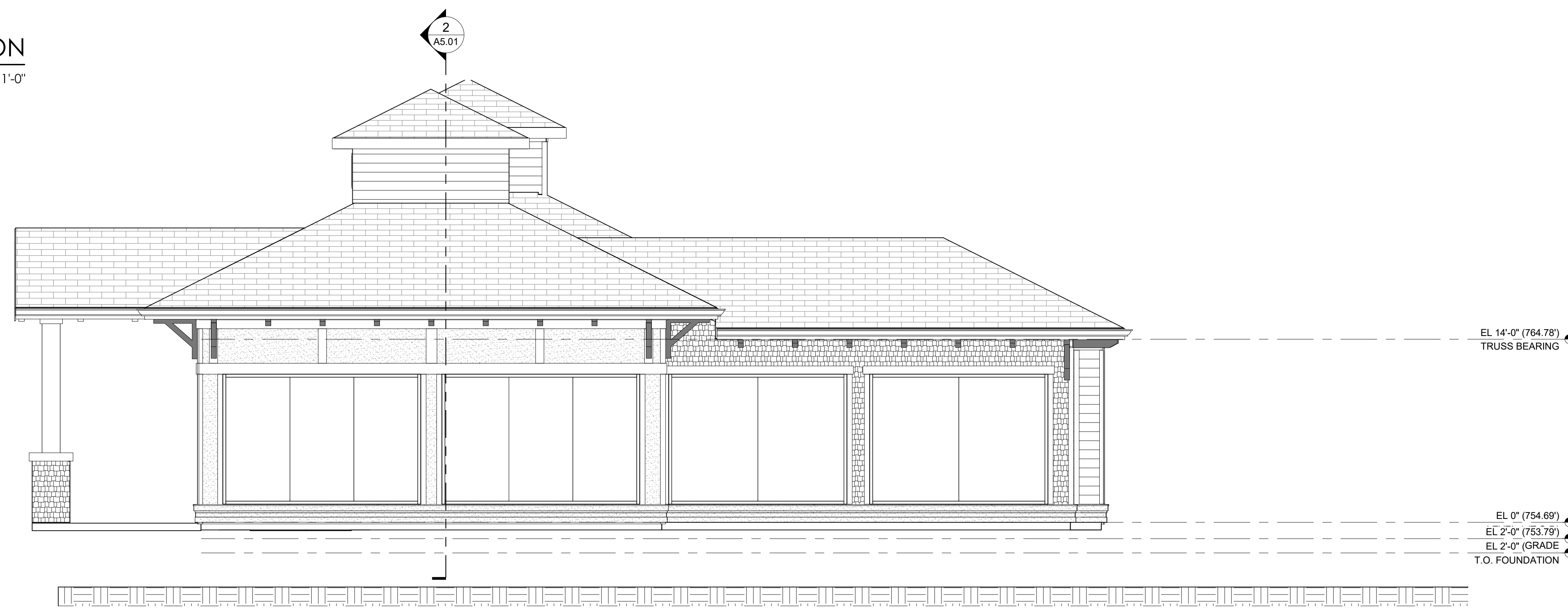


**EXTERIOR FINISHES:**

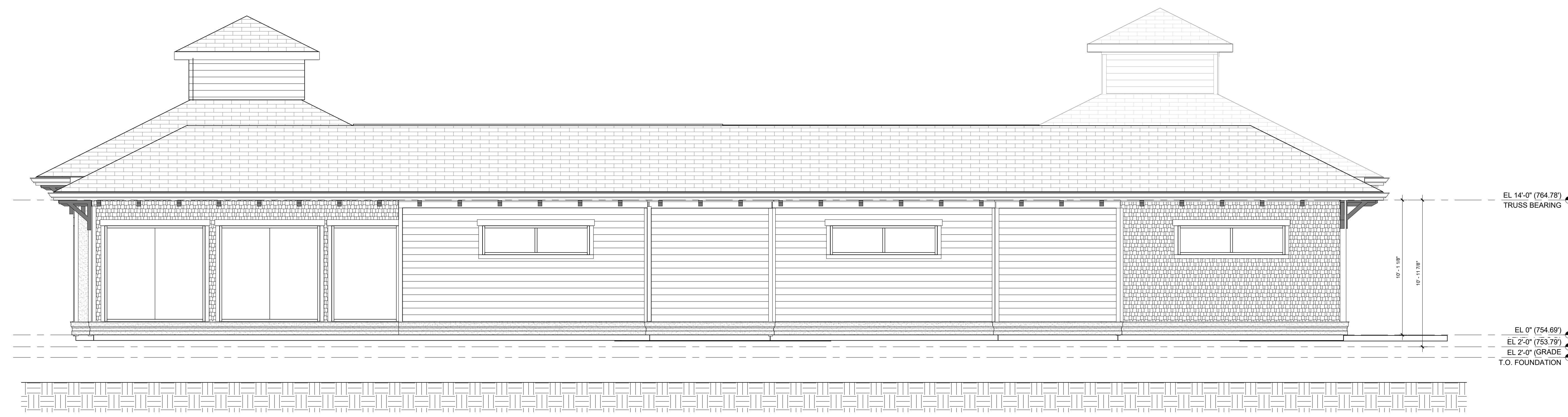
- ASR-1 - ASPHALT SHINGLE ROOF W/ 6:12 SLOPE
- SSMR-1 - STANDING SEAM METAL ROOF
- BRK-1 - MASONRY VENEER
- FC-1 - FIBER CEMENT SHAKES W/ FC TRIM
- FC-2 - FIBER CEMENT LAP SIDING W/ 7" REVEAL & FC TRIM
- FC-3 - FIBER CEMENT FLAT PANEL W/ FC TRIM
- R-1 - POWDER COAT ALUMINUM RAILING
- R-2 - STEEL CABLE RAIL W/ POWDER COAT STEEL TOP RAIL
- W-1 - WHITE VINYL WINDOW SYSTEM (BASIS OF DESIGN: PLYGEM)
- W-2 - WHITE VINYL WINDOW W/ SIMULATED DIVIDED LITE MUNTINS (BASIS OF DESIGN: PLYCEM)
- SF-1 - STOREFRONT WINDOW/ENTRY SYSTEM
- CW-1 - CURTAIN WALL SYSTEM
- BS-1 - PREFABRICATED ALUMINUM BAHAMA SHUTTER
- PMC-1 - PREFABRICATED MTL CANOPY
- PML-1 - PREFABRICATED MTL LOUVER
- WDC-1 - PAINTED WOOD CORBELS
- FGD-1 - FIBER GLASS UNIT BALCONY DOOR



**2**  
A4.01 **PLAN NORTH ELEVATION**  
SCALE: 1/4" = 1'-0"



**3**  
A4.01 **PLAN WEST ELEVATION**  
SCALE: 1/4" = 1'-0"



**1**  
A4.01 **PLAN SOUTH ELEVATION**  
SCALE: 1/4" = 1'-0"

**NOT FOR  
CONSTRUCTION**

**DESIGN DEVELOPMENT**

SYMPHONY PARK - MODEL  
SHOWROOM

**LOCATION** / HUNTERSVILLE, NC  
**PROJECT #** / 208PD400  
**DATE** / 02-12-2021  
**DRAWN** / CRJUG

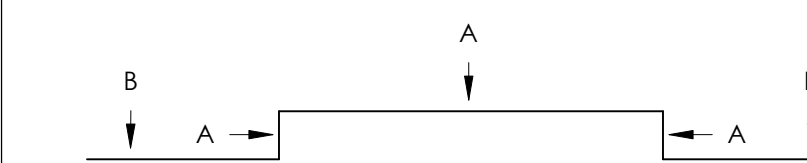
COPYRIGHT 2021 BB+M ARCHITECTURE PLLC.

Revisions		
No.	Description	Date

**EXTERIOR ELEVATIONS**

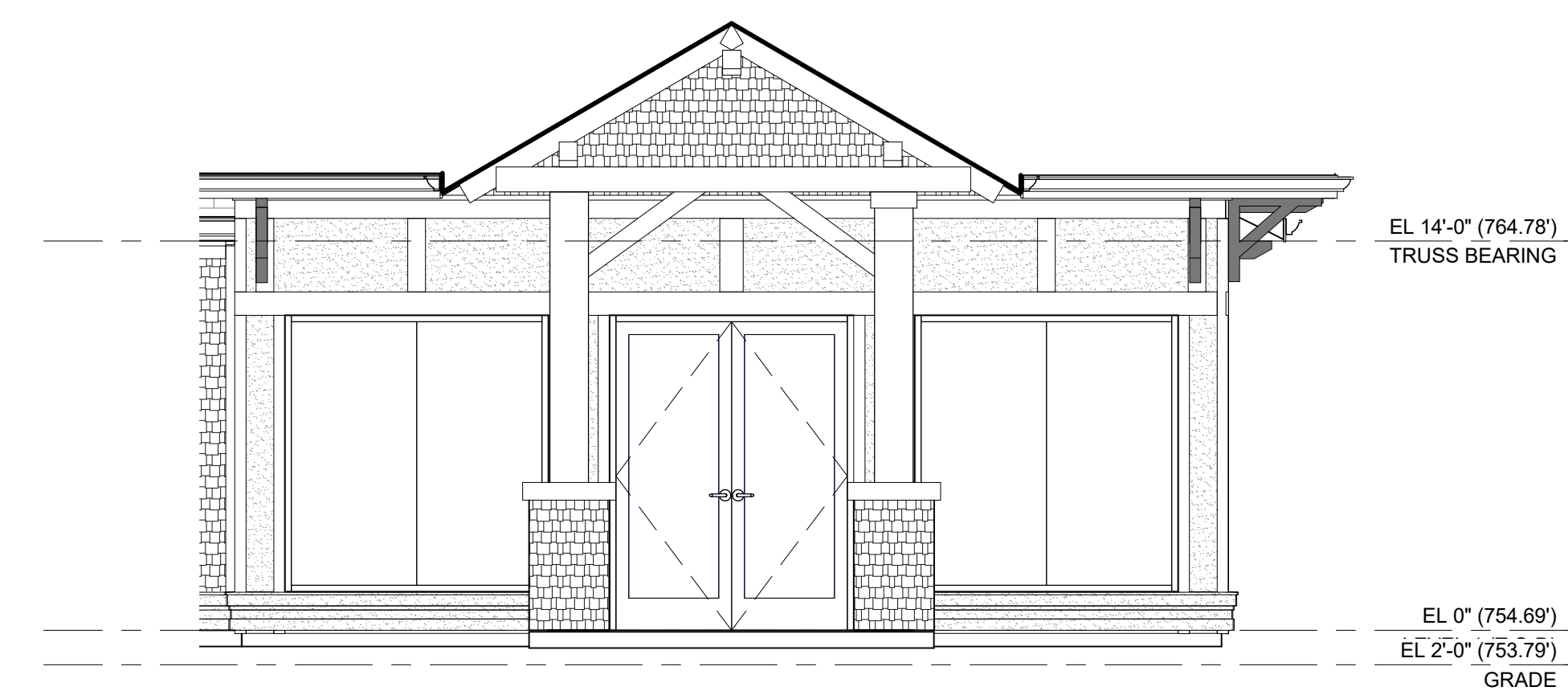
**GENERAL NOTES:**

MATERIAL (A) AND COLOR AT FACE OF BAY RETURNS  
AROUND THE SIDES AND BACK TO THE BUILDING. (TYP.)

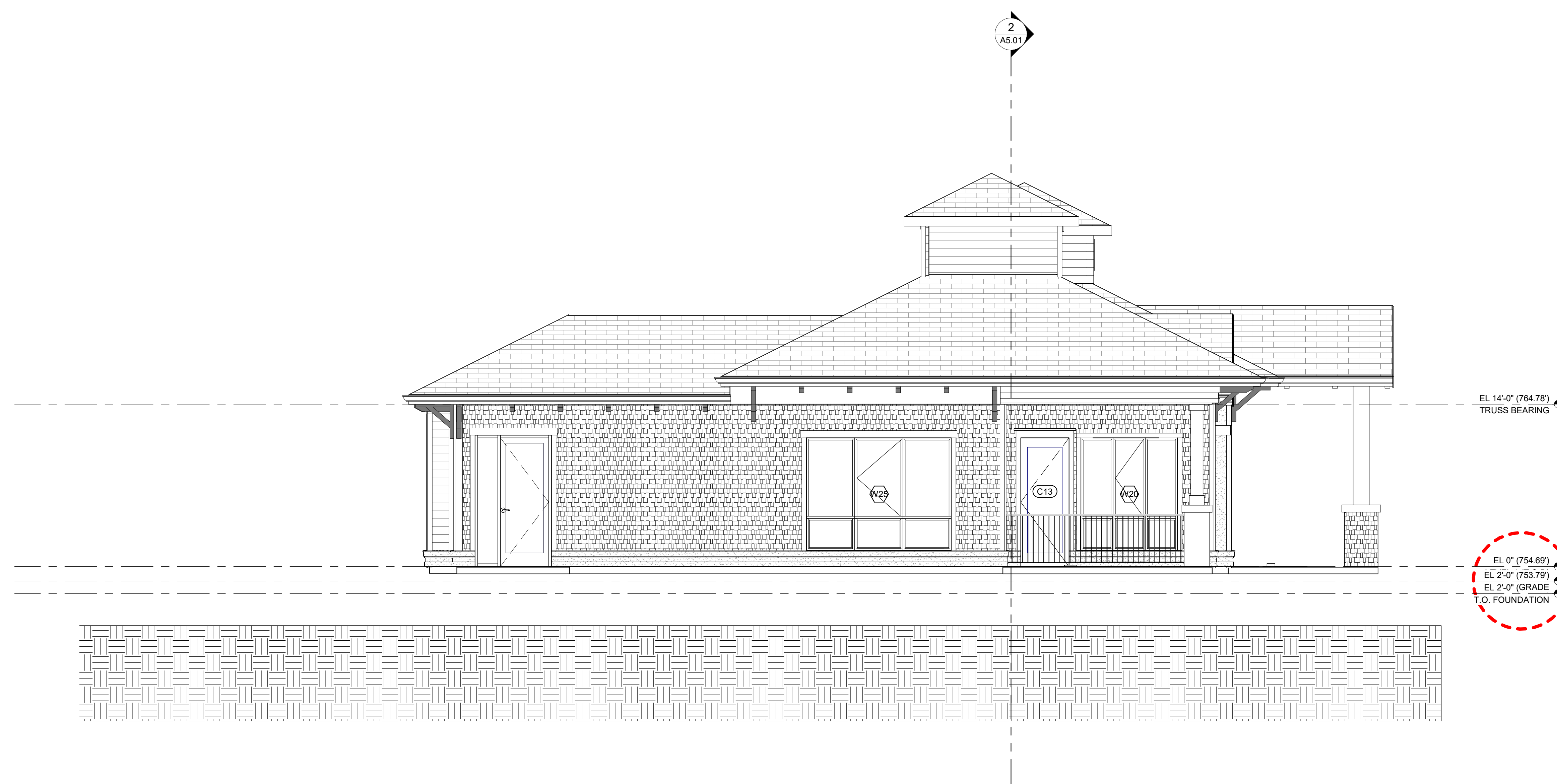


**EXTERIOR FINISHES:**

- ASR-1 - ASPHALT SHINGLE ROOF W/ 6:12 SLOPE
- SSMR-1 - STANDING SEAM METAL ROOF
- BRK-1 - MASONRY VENEER
- FC-1 - FIBER CEMENT SHAKES W/ FC TRIM
- FC-2 - FIBER CEMENT LAP SIDING W/ 7" REVEAL & FC TRIM
- FC-3 - FIBER CEMENT FLAT PANEL W/ FC TRIM
- R-1 - POWDER COAT ALUMINUM RAILING
- R-2 - STEEL CABLE RAIL W/ POWDER COAT STEEL TOP RAIL
- W-1 - WHITE VINYL WINDOW SYSTEM (BASIS OF DESIGN: PLYGEM)
- W-2 - WHITE VINYL WINDOW W/ SIMULATED DIVIDED LITE MUNTINS (BASIS OF DESIGN: PLYCEM)
- SF-1 - STOREFRONT WINDOW/ENTRY SYSTEM
- CW-1 - CURTAIN WALL SYSTEM
- BS-1 - PREFABRICATED ALUMINUM BAHAMA SHUTTER
- PMC-1 - PREFABRICATED MTL CANOPY
- PML-1 - PREFABRICATED MTL LOUVER
- WDC-1 - PAINTED WOOD CORBELS
- FGD-1 - FIBER GLASS UNIT BALCONY DOOR



**2**  
A4.02  
**ELEVATION - MAIN ENTRY WALL**  
SCALE: 1/4" = 1'-0"



**1**  
A4.02  
**PLAN EAST ELEVATION**  
SCALE: 1/4" = 1'-0"