

Frameworks

The Frameworks are the underlying structure of the Town. The Master Plan recommends the existing street system and park system be developed such that the community is better connected and it functions more effectively and efficiently.

STREET FRAMEWORKS

The overall goal of the proposed Street Frameworks is to improve capacity with new linkages and better connectivity. The following recommendations address the capacity needs of the study area calling for the creation of new street network or the connection of existing streets to form an integrated network. The Plan recommends five types of improvements shown on the following page.

1. **Improve Interchange Congestion by Adding New Network**
The Plan recommends minor modifications to the I-77 ramps in order to add network that distributes traffic. The Plan recommends additional connections to and from the Northbound pair of ramps (on and off ramps) that connect to US-21 and lengthen the ramps at their current locations. The additional links will offer an opportunity for traffic using the congested segment of Gilead Road between the ramps and US-21 to quickly disperse via a number of route choices.
2. **New Well-Connected Local Streets at the Commercial Centers**
The Plan recommends extending Hillcrest Drive north across Gilead Road, in front of Huntersville Square to connect into Commerce Center Drive.

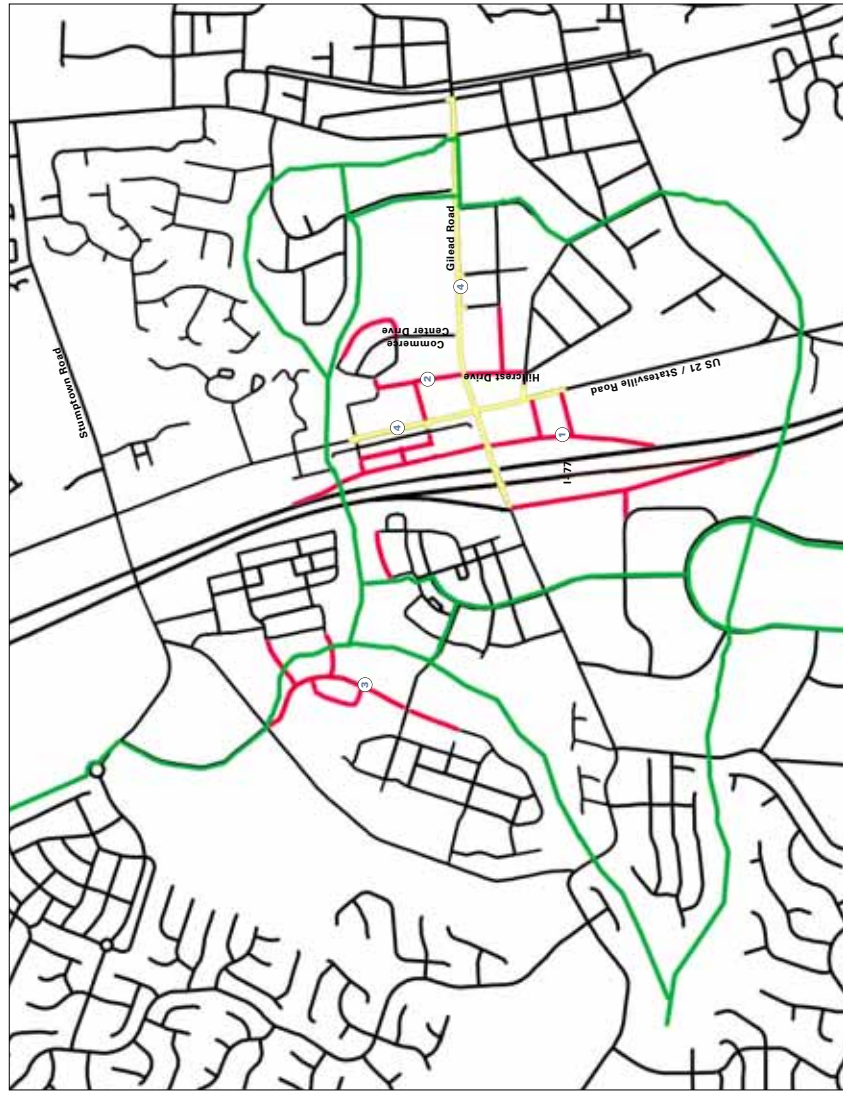


- NEW ROADS
- IMPROVED ROADS
- PEDESTRIAN AND BIKE CONNECTIONS

Proposed Street Frameworks



Proposed Open Space Frameworks



PROPOSED STREET FRAMEWORK New streets and a modified ramp system will create a more connected community and will help transition the area from a suburban strip commercial center to an integrated mixed-use area that serves as a vibrant gateway into Huntersville's historic downtown.

- KEY STREET FRAMEWORK RECOMMENDATIONS**
- 1 Improve interchange congestion by adding network.
 - 2 New local streets.
 - 3 Local vehicular and pedestrian connections.
 - 4 Widen US-21 for limited segments.
 - 5 Bicycle and recreational network.

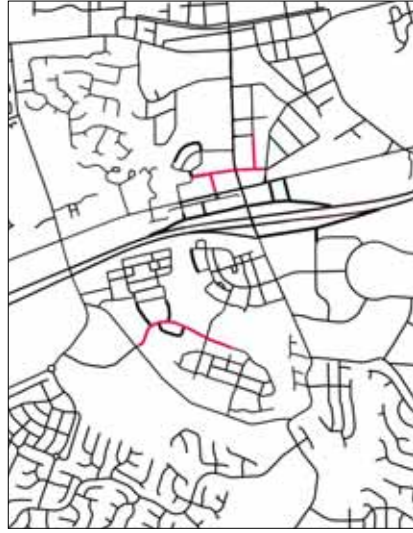
- NEW ROADS
- IMPROVED ROADS
- PEDESTRIAN AND BIKE CONNECTIONS

3. Local Vehicular and Pedestrian Connections
Various short roadway and pedestrian links are recommended between areas that generate local trips. The Plan also recommends connecting roadways that when linked will provide additional capacity to the network. In a number of cases these new links connect to existing roadway stub-outs; in other cases the additional network can be built when the new development comes on line.
4. Widen US-21 for Limited Segments
The Plan recommends widening US-21 to four lanes north and south of Gilead Road for approximately one quarter mile in each direction. A wider road yields large increases in capacity at the critical US-21/Gilead Road Intersection.
5. Bicycle and Recreational Network
In addition to the street connections and improvements listed above, the Plan recommends a bicycle and recreational network that connects neighborhoods to parks and other daily activities of life. Trails may be off-street as in the greenways, bike lanes on-street or signed bike routes.

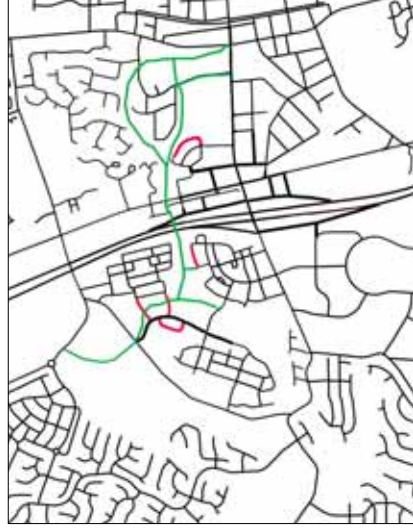
PROPOSED STREET NETWORK IMPROVEMENTS AND PEDESTRIAN CONNECTIONS



1. Improve interchange congestion by adding new network



2. New local streets connecting the commercial centers



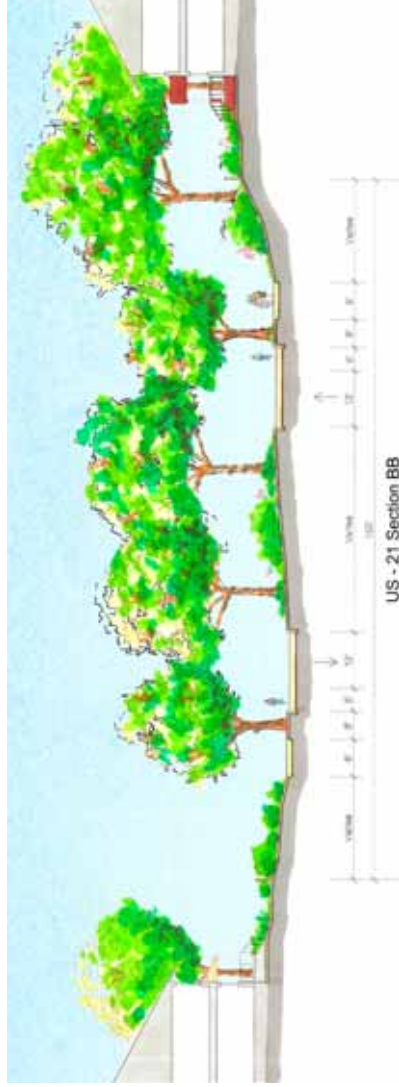
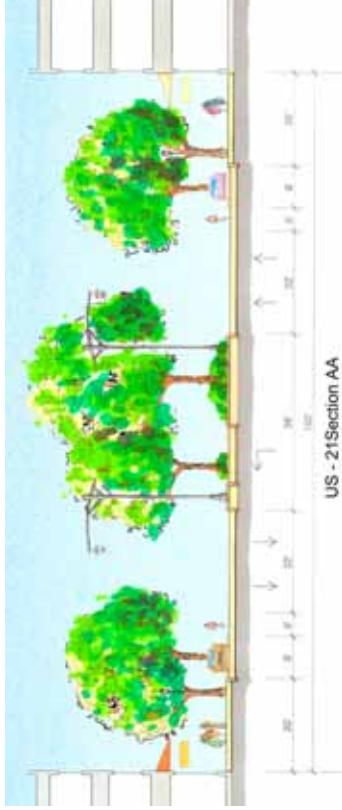
3. Local vehicular and pedestrian connections between commercial areas and neighborhoods



4. Widen US-21 for limited segments; improve Gilead Road



5. Bicycle and recreational network



TOP Proposed 4 lane section between Dallas Drive and Compass Street
 BOTTOM Proposed 2 lane parkway section for US-21 north of Compass Street and one block south of Dallas Drive

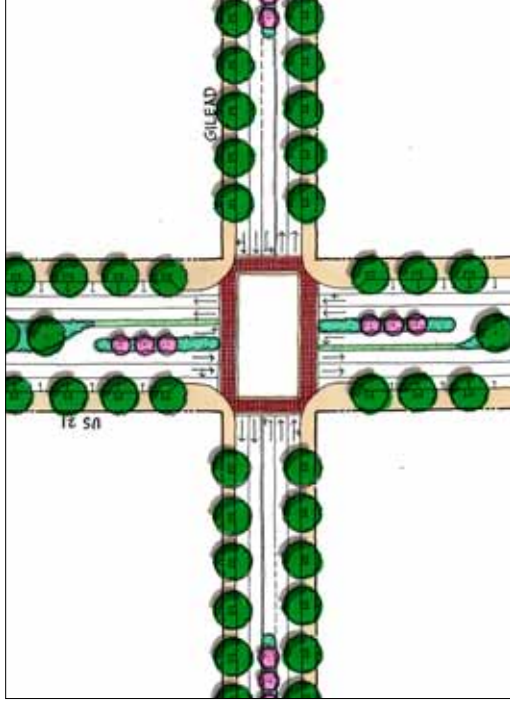
US-21/ STATESVILLE ROAD The Plan recommends widening Statesville Road to four lanes between Compass Street and Dallas Drive.



GILEAD ROAD The Plan recommends maintaining the existing character of Gilead Road with pedestrian and landscape enhancements



GILEAD ROAD Proposed rendering, and existing photograph of Gilead Road



TOP Proposed street improvements and widening in existing ROW

Concept Plan for Gilead Road / US-21 intersection (with network improvement)

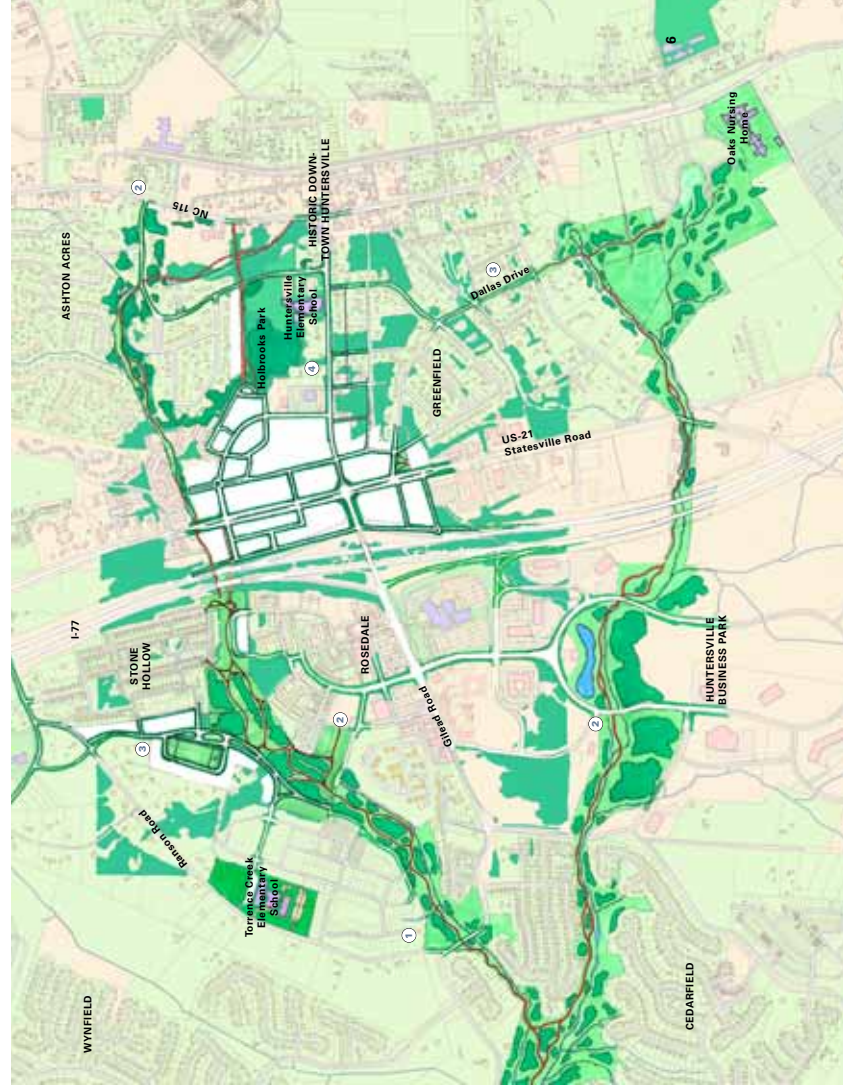
PARK AND OPEN SPACE FRAMEWORK

The Master Plan recommends several additions and improvements to the current inventory of parks and open spaces. Developing a well integrated and connected park and open space system in Huntersville will be increasingly important to the overall quality of life in the Town. Such a system will provide recreational opportunities, stormwater management opportunities, the creation of unique development addresses and transportation alternatives to surface roadways.

The underlying structure to the Open Space Framework are the Town's many streams and creeks. Protection of these resources is critical because they are a primary source for Mountain Island Lake, the Town's public water supply. The Plan recommends developing these streambeds and low lying lands into greenways with a low-impact trail system that connects the neighborhoods.

The Plan also recommends augmenting the greenway system with an on-street bike network containing both striped bike lanes as well as simply marked bike routes. These routes are particularly important where access to greenways is limited.

- KEY OPEN SPACE AND PARKS FRAMEWORK RECOMMENDATIONS**
- 1 Extension of Greenway System
 - 2 Multiple access points and trail heads to greenway
 - 3 On-street bike routes and lanes
 - 4 Sidewalks on all new streets



Open Space Framework Plan